

Clear Lake

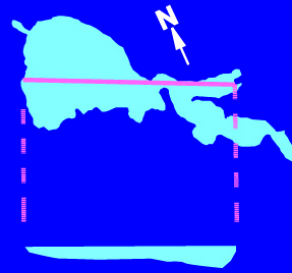
Mooring Deployments
March 2019 – June 2019



Clear Lake Lake Tahoe

Surface Area 177 km²

Mean depth 8 m
Max depth 18 m



Horizontal scale

0 5 10 km

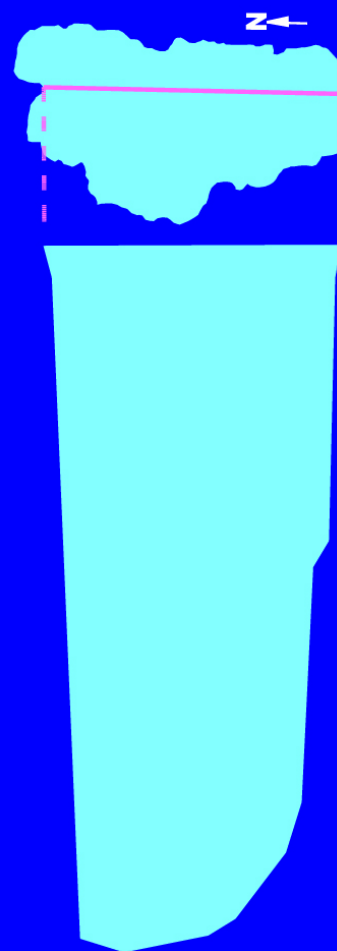
Vertical scale

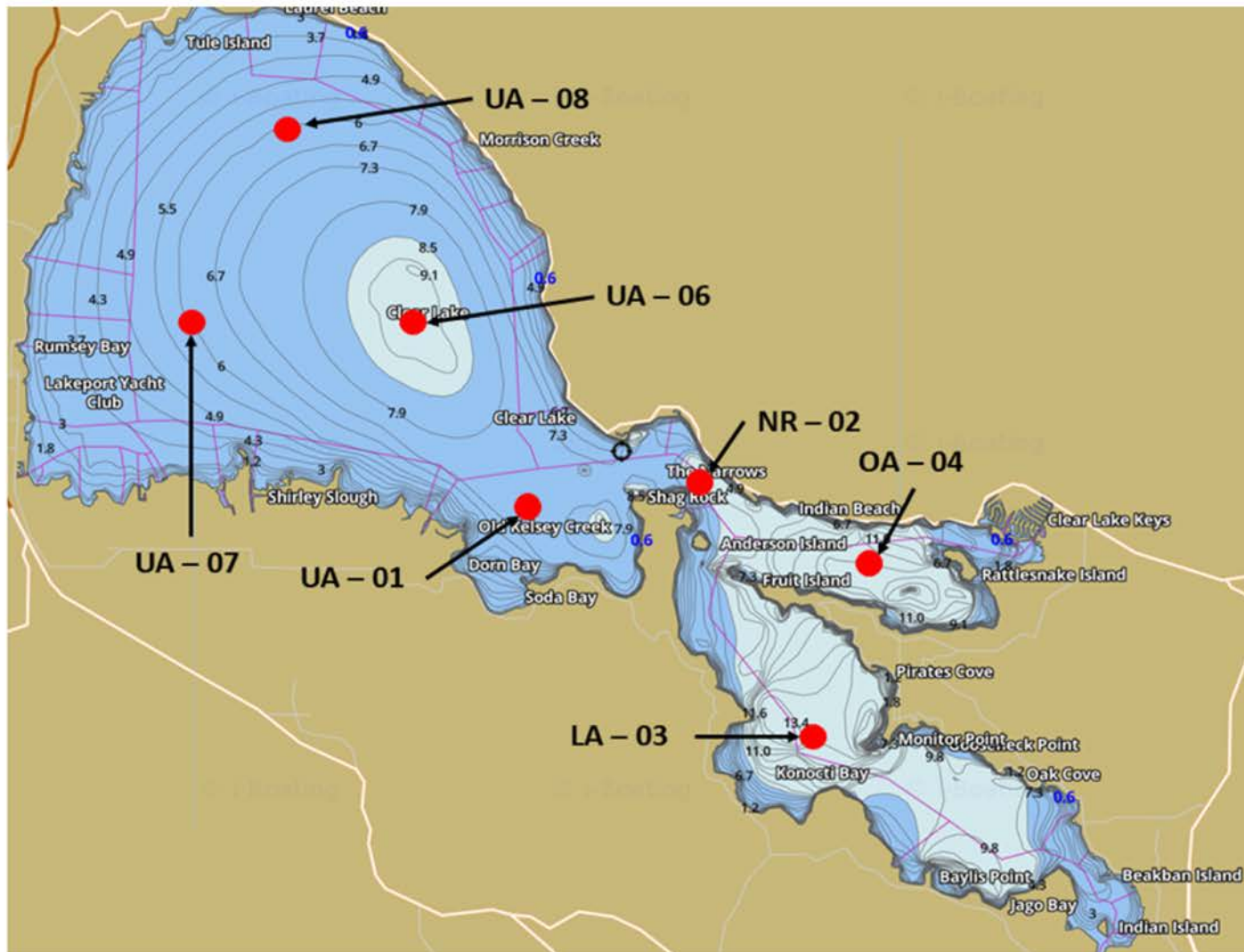
0 50 100 m

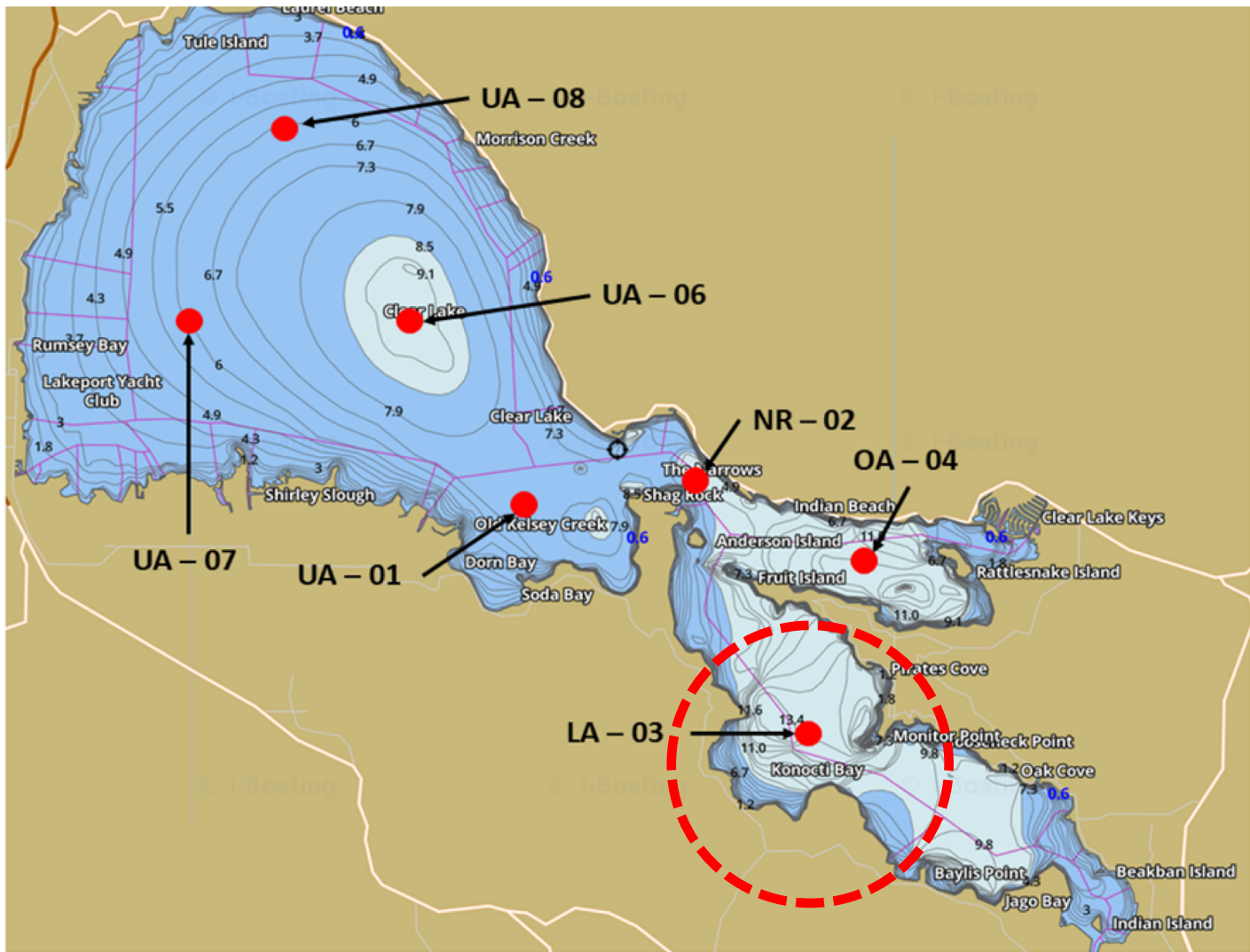
Lake Tahoe

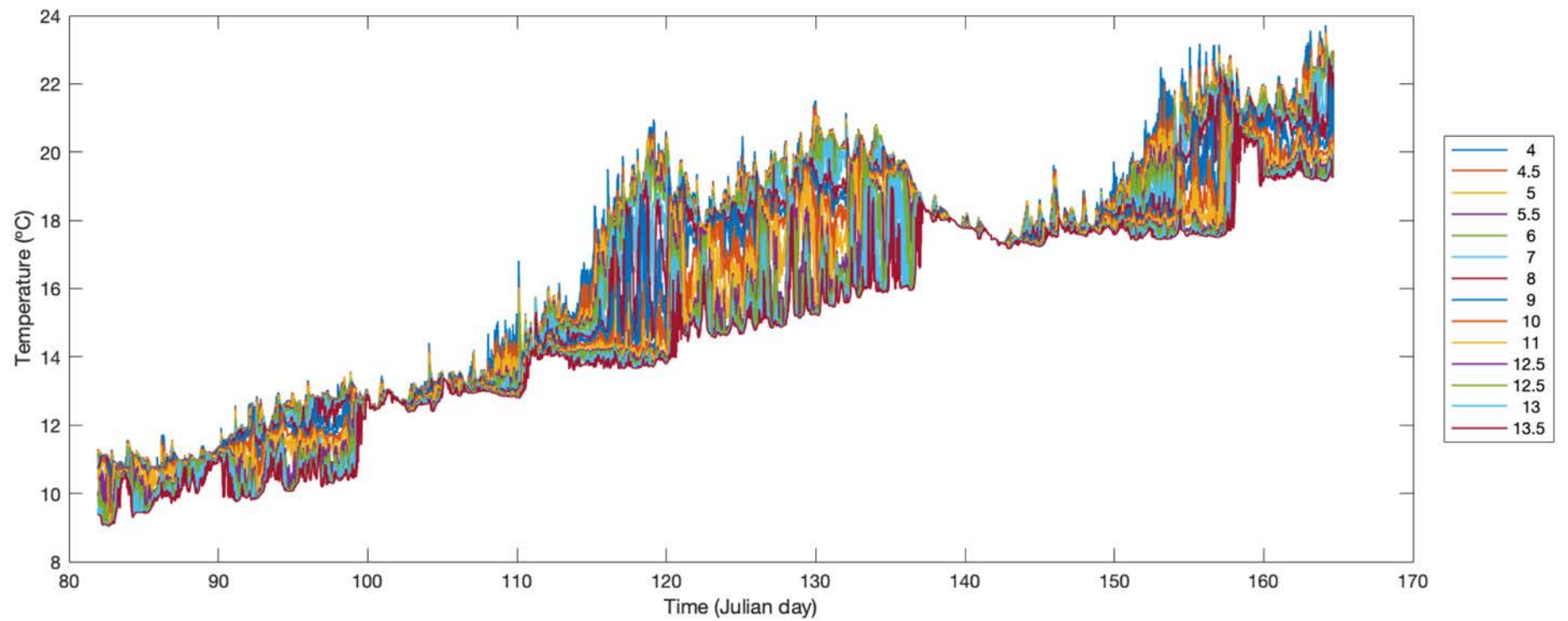
Surface Area 500 km²

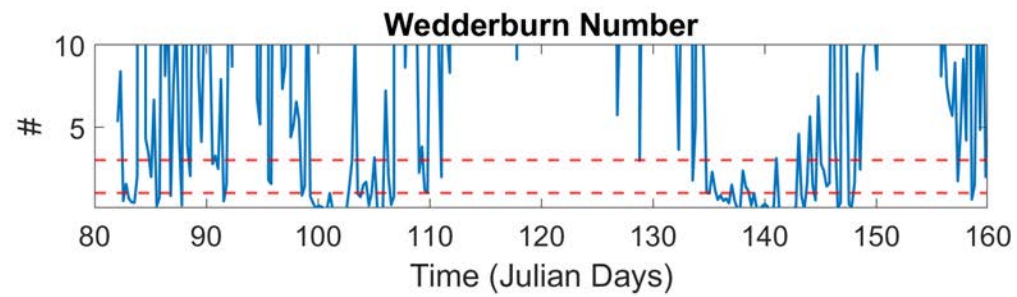
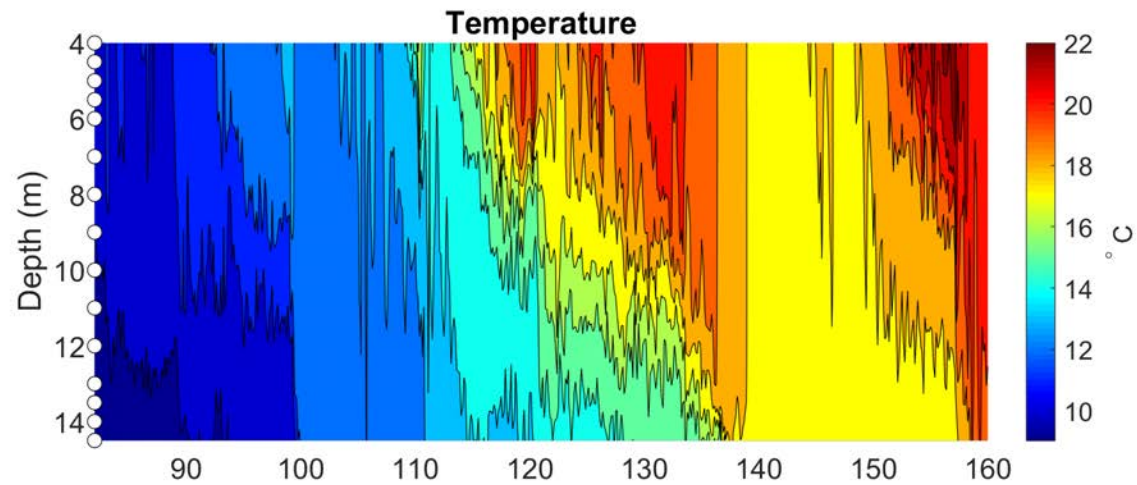
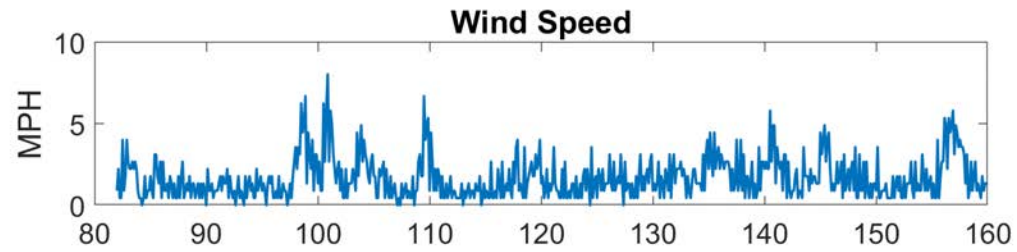
Mean depth 248 m
Max depth 501 m

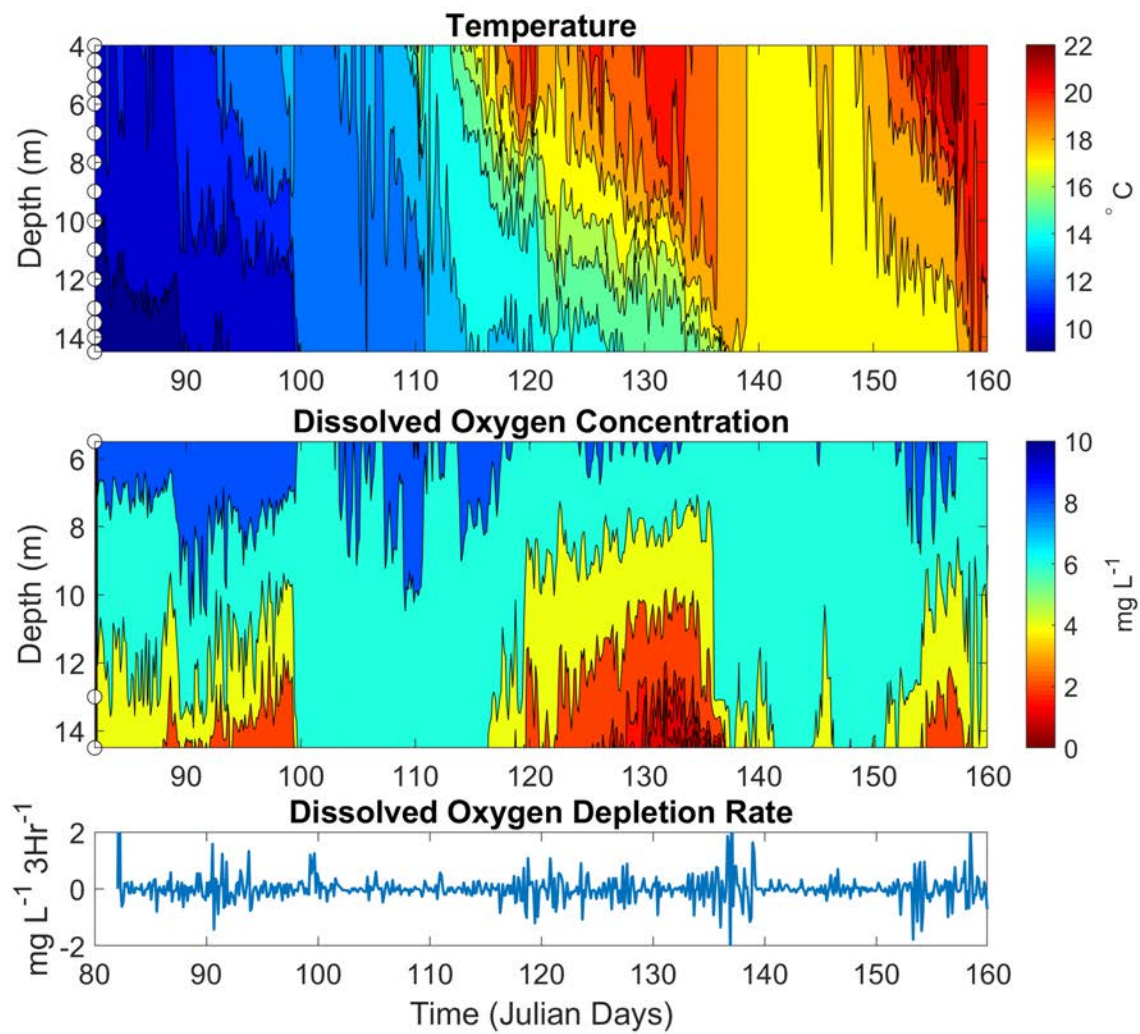


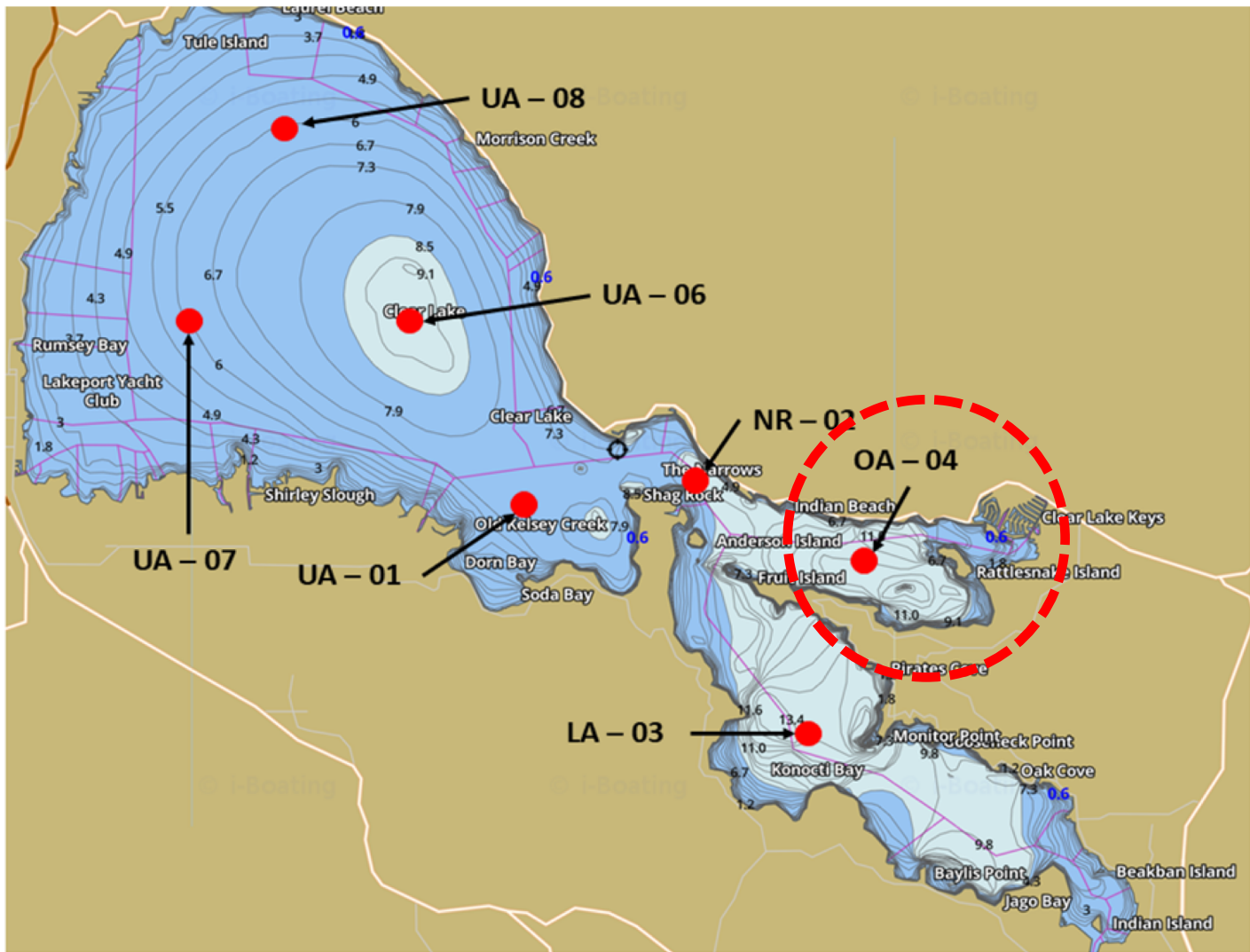


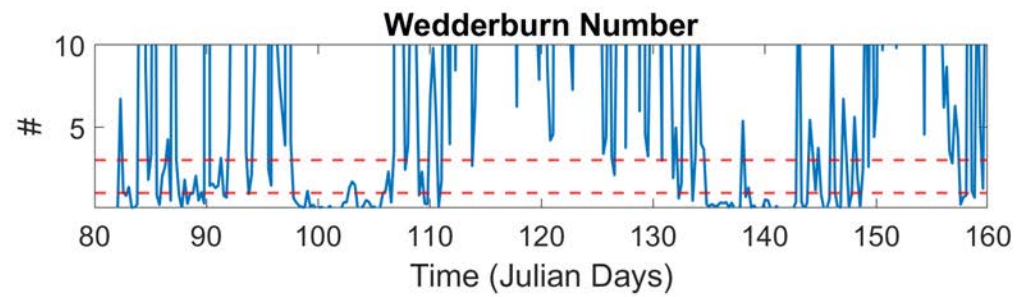
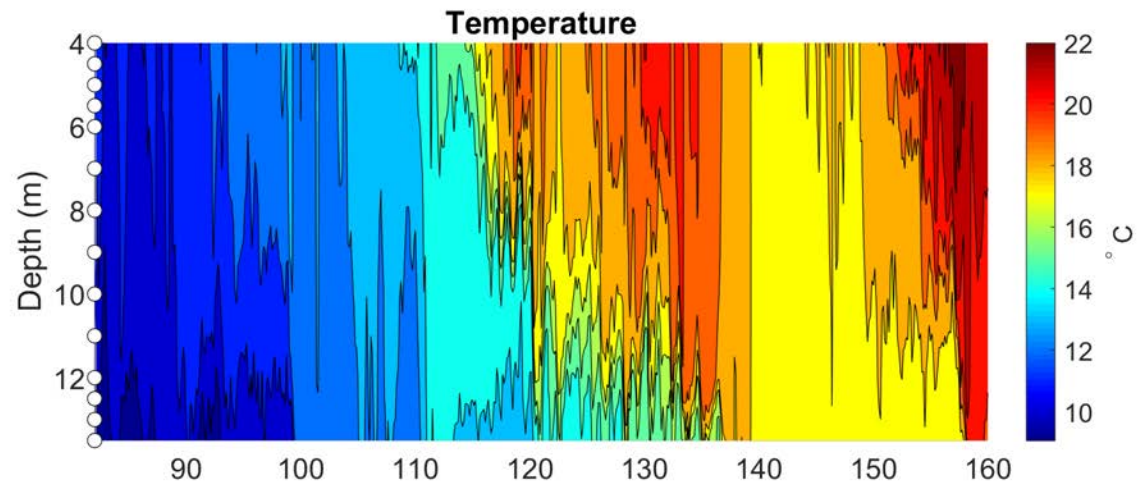
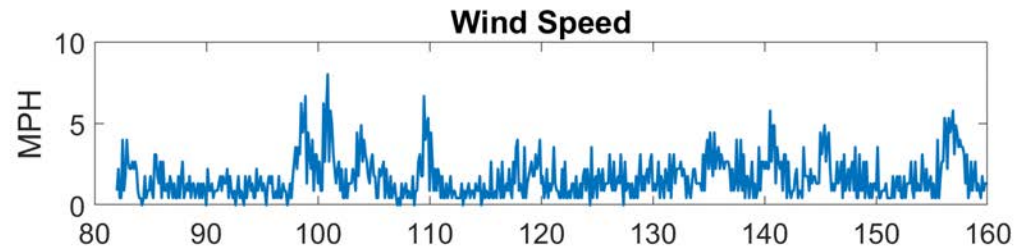


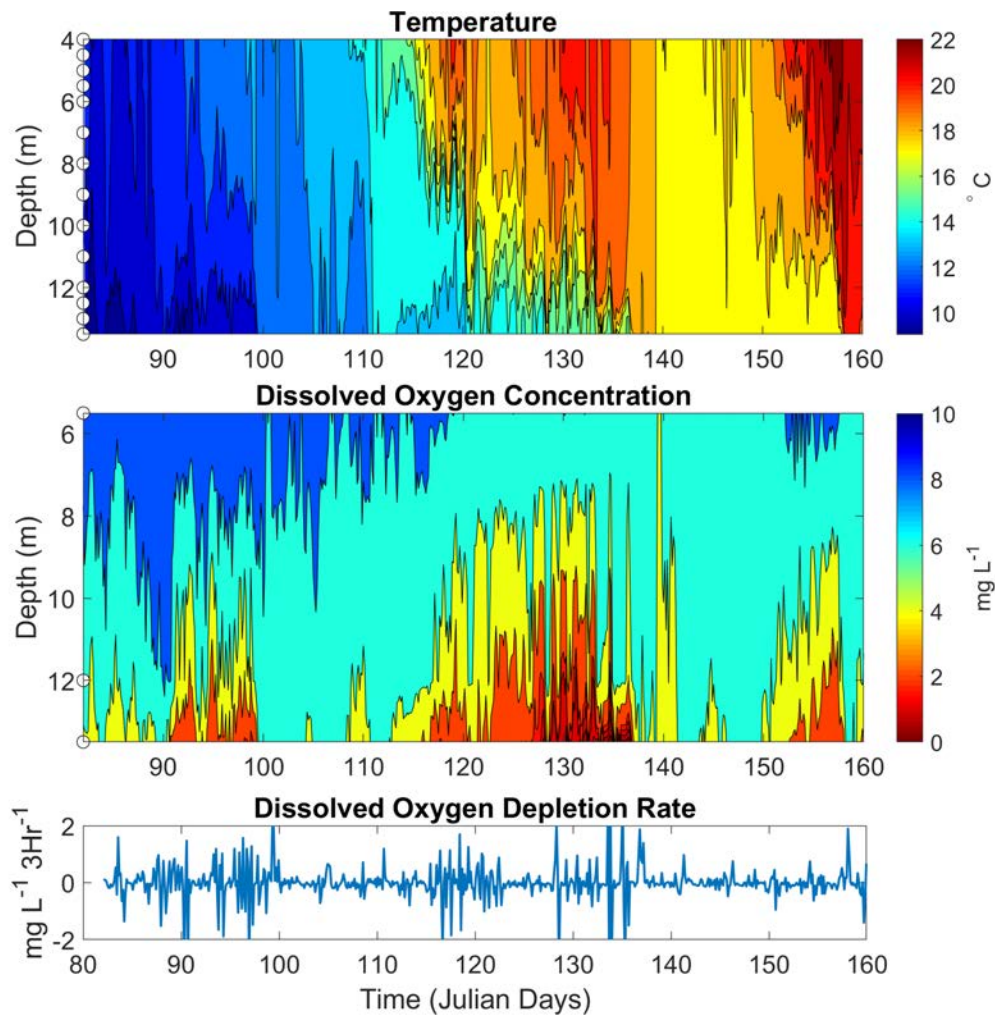




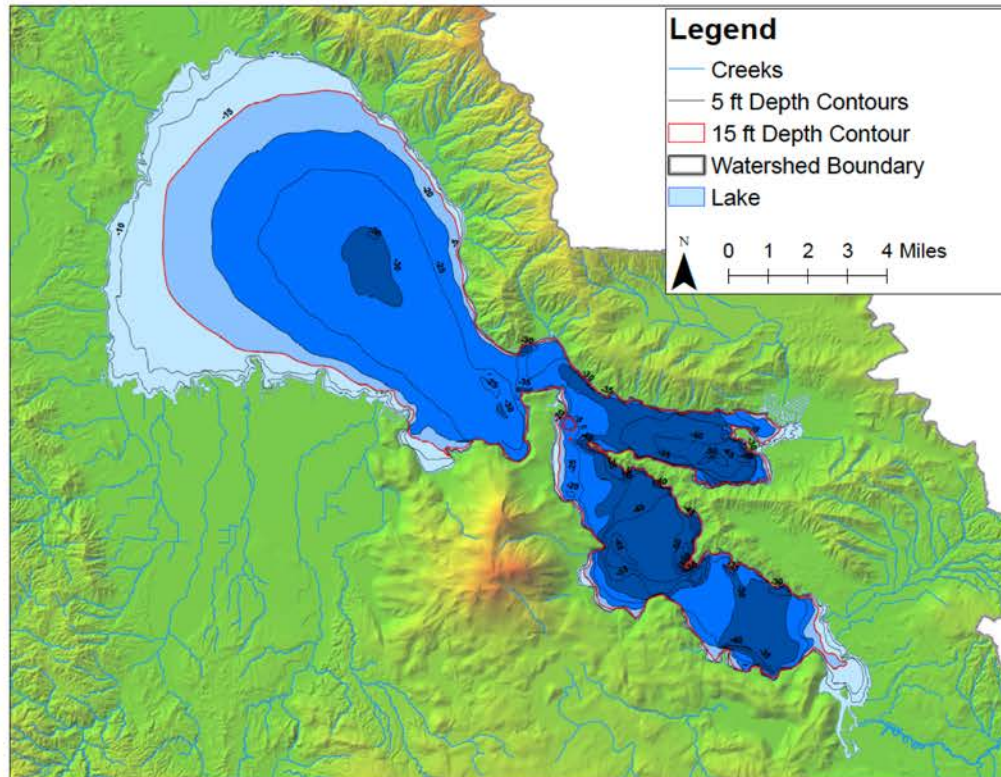








BALLPARK ESTIMATES OF EXTERNAL vs INTERNAL P-LOADING



Clear Lake Bathymetry Survey (2002)

| Current External TP Loading ¹ [MT yr ⁻¹] | TMDL Target TP Loading ¹ [MT yr ⁻¹] | Number of Anoxic Days in Hypolimnion | Internal TP Loading ² [MT] |
|---|--|--------------------------------------|---------------------------------------|
| 150 | 87.2 | 30 | 57.9 – 74.5 |
| | | 60 | 115.7 – 149.1 |
| | | 90 | 173.6 – 223.6 |

¹ External loading estimates based on 2004 Tetra Tech Clear Lake Nutrient TMDL report

² Internal loading ranges calculated for sediment phosphorus release rate of 16.4 - 21 mg m⁻² d⁻¹ (Nurnberg 1988, Welch and Cooke 1995) across lake surface area below 15 ft depth.